

Diplomatic Oleodinamica in the **Mobile** sector



MOBILE Highly innovative solutions for mobile applications

Tractors, harvesters, combiners, balers, brush cutters. Road rollers, paving machines, cement mixers, concrete pumps. Diggers, dumpers, bobcats, bulldozers. And also truck mounted cranes, lift trucks, telescopic lift platforms. The element common to the wide variety of the mobile applications is the increasing trend to replace the mechanical-manual actuations, operated via levers and linkages, with electro-hydraulic servo systems and remotely piloted drives. Such a replacement allows to improve the reliability and precision of the operations thus optimizing, for example, the curve referred to the actuation stroke/moving speed. The result is a more ergonomic device and an easier job to be performed by the operators.



In order to meet the needs of an ever evolving market, Diplomatic Oleodinamica has decided to capitalize the know-how acquired in the industrial sector to design and realize a range of solutions which, being focused on the proportional electronic valves, are specifically addressed to mobile applications. Such solutions are:

- **compact**, the extremely reduced dimensions of the components are possible thanks to the electro-hydraulic technology;
- **versatile**, i.e. they can calibrate the movement speed and precision according to the different operational needs;
- **resistant** to the atmospheric agents thanks to the use of stringent production standards (for example IP67, DEUTSCH connectors, coatings made of epoxy paint);
- easily **interfaceable** with the remotely piloted systems and with the machine controllers (PLC);
- **economical**, thanks to the presence of production synergies with the industrial sector.



Mini power-pack with BD6

BD6

On-off directional sandwich control valve with a high protection degree against the atmospheric agents (IP67 Standard), epoxy coating and DEUTSCH solenoid connectors. Integrated and piloted checks with a perfect seal. Typical applications: sprayers, lift platforms, stabilizers, multipurpose farm vehicles.



Load sensing modular block

BLS6

Sandwich load sensing valve, designed to guarantee a constant flow value independently of the load fluctuation. Thanks to the design modularity, it can be used either with the on-off or the proportional configuration, with an energy-saving flow rate control and a direct electric proportional control. It can be integrated with special functions for custom solutions.

Contrary to the piloted control, the direct control guarantees shorter strokes, a higher accuracy level, industrial repeatability and a very low hysteresis. It offers a high protection degree against the atmospheric agents (IP67 Standard, epoxy paint and DEUTSCH connectors). Typical applications: mini-diggers, truck mounted cranes, brush cutters, lift platforms.



DSB5 automatic inversion valve

DSB5

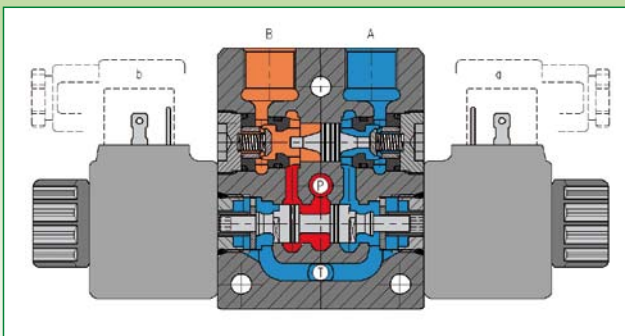
Automatic inversion valve; it changes the direction of the oil flow when the prefixed threshold has been reached. Typical applications: pressure enhancers, static and portable waste compactors, slurry screapers

6-way selector

It moves the oil flow from one point to the other via an on-off electric control. Sandwich configuration and high protection against the atmospheric agents.

Hitch control

Share electronic hoisting device; it integrates in a single configuration with triple closed loop a proportional valve and three sensors for the detection of the critical parameters (position, stress and slipping).



Section of BD6 assembly

