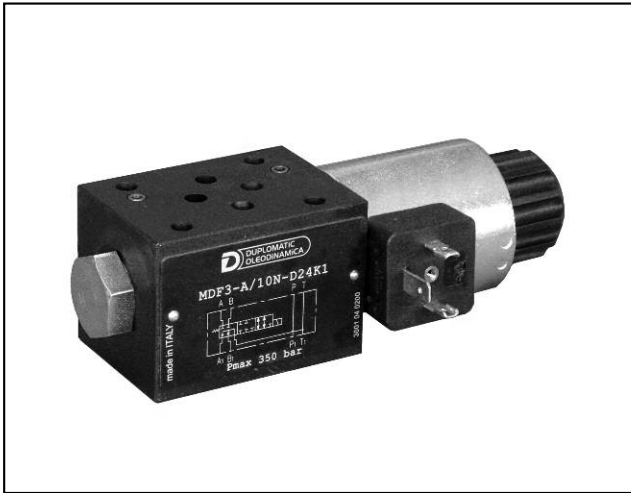


MDF3

SHUT-OFF SOLENOID VALVE

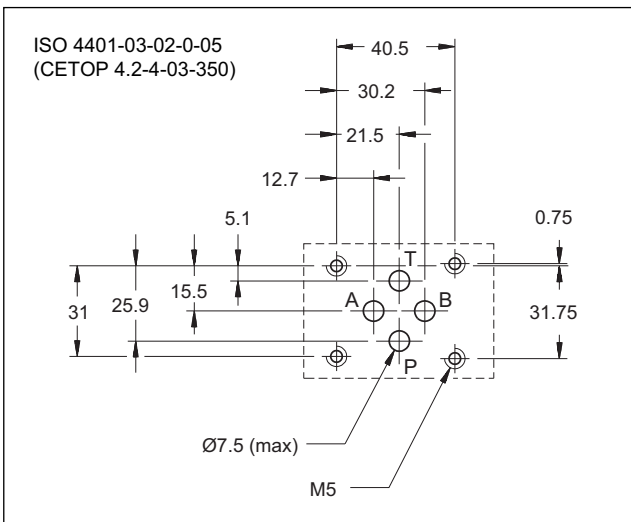
SERIES 10



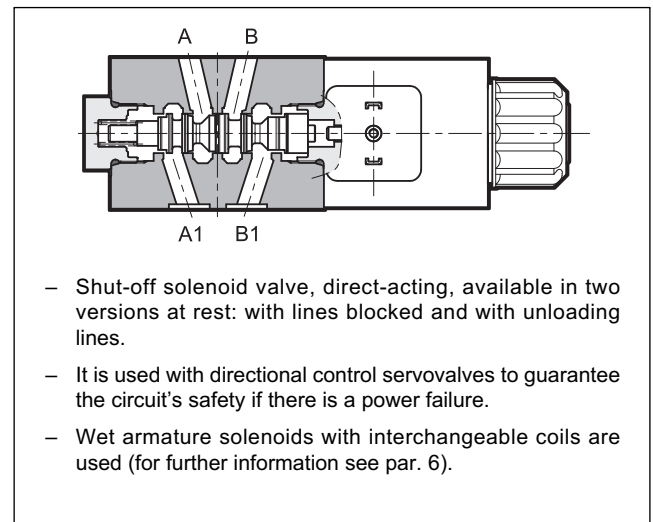
MODULAR VERSION ISO 4401-03

p max 350 bar
Q max 50 l/min

MOUNTING INTERFACE



OPERATING PRINCIPLE



SPOOL TYPE

(see hydraulic symbols table)

Type "A": it is used to unload the lines, with the valve at rest.

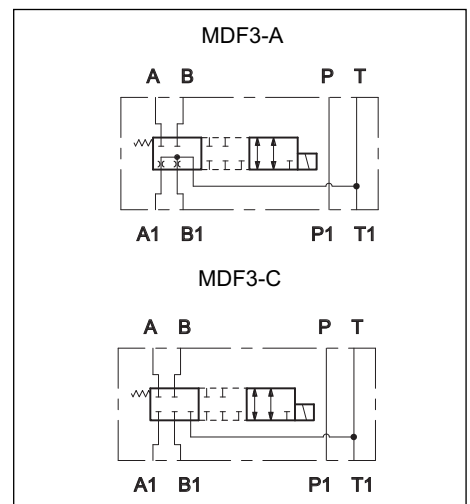
Type "C": it is used to block the lines, with the valve at rest.

PERFORMANCE RATINGS

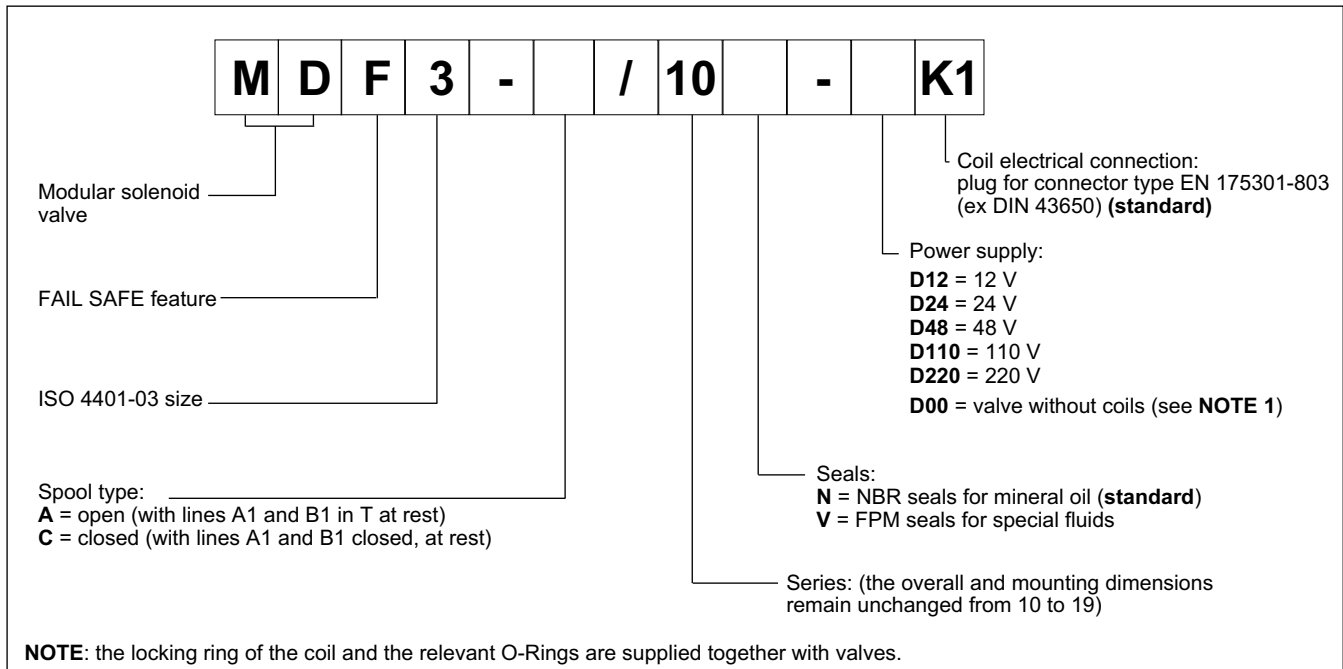
(working with mineral oil of viscosity of 36 cSt at 50°C)

Maximum operating pressure	bar	350
Maximum flow rate	l/min	50
Ambient temperature range	°C	-20 / +50
Fluid temperature range	°C	-20 / +80
Fluid viscosity range	cSt	10 ÷ 400
Fluid contamination degree	According to ISO 4406:1999 class 20/18/15	
Recommended viscosity	cSt	25
Mass	kg	1,5

HYDRAULIC SYMBOLS



1 - IDENTIFICATION CODE

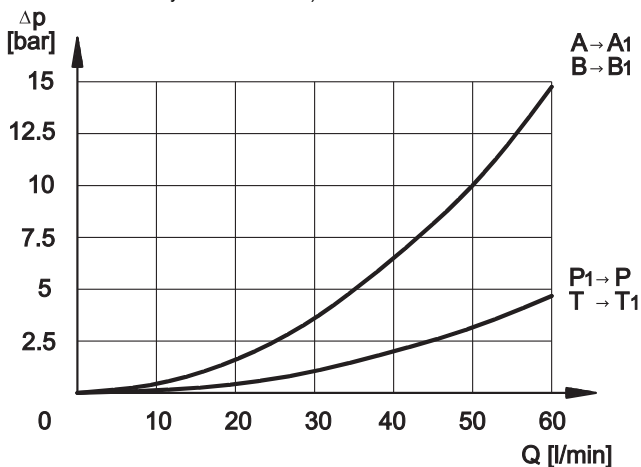


2 - HYDRAULIC FLUIDS

Use mineral oil-based hydraulic fluids HL or HM type, according to ISO 6743-4. For these fluids, use NBR seals (code N). For fluids HFDR type (phosphate esters) use FPM seals (code V). For the use of other fluid types such as HFA, HFB, HFC, please consult our technical department. Using fluids at temperatures higher than 80 °C causes a faster degradation of the fluid and of the seals characteristics. The fluid must be preserved in its physical and chemical characteristics.

3 - PRESSURE DROPS Δp -Q

(obtained with viscosity 36 cSt at 50 °C)



4 - SWITCHING TIMES

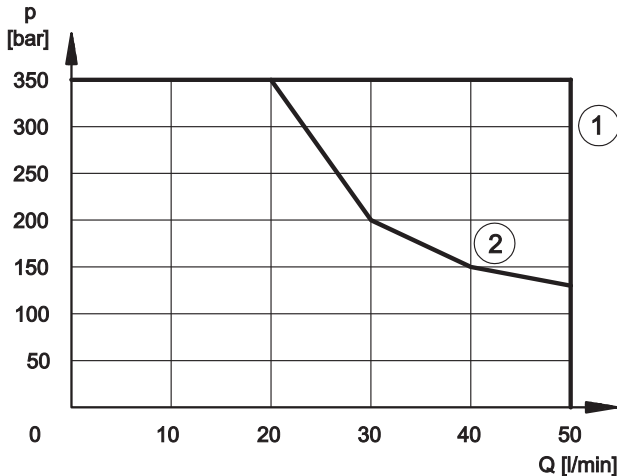
The values indicated are obtained according to ISO 6403 standard, with mineral oil viscosity 36 cSt at 50°C.

TIMES	
ENERGIZING	DE-ENERGIZING
60 ÷ 90 ms	20 ÷ 50 ms

5 - OPERATING LIMITS

The curves define the flow rate operating fields according to the valve pressure of the different versions. The values have been obtained according to ISO 6403 norm with solenoids at rated temperature and supplied with voltage equal to 90% of the nominal voltage.

The values have been obtained with mineral oil, viscosity 36 cSt, temperature 50 °C and filtration according to ISO 4406:1999 class 18/16/15.



- 1) Curve related to the de-energizing of the solenoid valve
Curve related to the energizing of the solenoid valve, without any flow in A and B lines
- 2) Curve related to the energizing of the solenoid valve, with flow in A and B lines

6 - ELECTRICAL FEATURES

6.1 - Solenoids

These are essentially made up of two parts: tube and coil. The tube is threaded into the valve body and includes the armature that moves immersed in oil, without wear. The inner part, in contact with the oil in the return line, ensures heat dissipation.

The coil is fastened to the tube by a threaded ring, and can be rotated, to suit the available space.

NOTE 1: In order to further reduce the emissions, use of type H connectors is recommended. These prevent voltage peaks on opening of the coil supply electrical circuit (see cat. 49 000).

NOTE 2: The IP65 protection degree is guaranteed only with the connector correctly connected and installed.

VOLTAGE SUPPLY FLUCTUATION	± 10% Vnom
MAX SWITCH ON FREQUENCY	18.000 ins/hr
DUTY CYCLE	100%
ELECTROMAGNETIC COMPATIBILITY (EMC) (NOTE 1)	In compliance with 2014/30/EU
LOW VOLTAGE	In compliance with 2014/35/EU
CLASS OF PROTECTION Atmospheric agents (IEC 60529) Coil insulation (VDE 0580) Impregnation	IP 65 (NOTE 2) class H class F

6.2 - Current and absorbed power

The table shows current and power consumption values relevant to the different coil types for DC.

Using connectors type "D" (see cat. 49 000) with embedded bridge rectifier it is possible to feed DC coils (starting from 48V voltage) with alternating current (50 or 60 Hz), considering a reduction of the operating limits of about 5-10%.

Coils for direct current (values ± 5%)

Suffix	Nominal voltage [V]	Resistance at 20°C [Ω]	Current consumpt. [A]	Power consumpt. [W]	Coil code
D12	12	4,4	2,72	32,6	1903080
D24	24	18,6	1,29	31	1903081
D48	48	78,6	0,61	29,3	1903083
D110	110	436	0,26	28,6	1903464
D220	220	1758	0,13	28,6	1903465

7 - ELECTRIC CONNECTORS

Solenoid operated valves are delivered without connectors. Connectors can be ordered separately. See catalogue 49 000.

8 - OVERALL AND MOUNTING DIMENSIONS

